



PEACE, PROSPERITY AND
REGIONAL INTEGRATION

KENYA NATIONAL CONSOLIDATION WORKSHOP–PREPARATION OF A ROADMAP FOR THE BORDERLANDS OF THE HOA

IGAD’S ROLE IN THE BORDERLANDS: INSTITUTIONAL STRENGTHENING CAPACITIES

*RADISSON BLUE, UPPER HILL
21ST – 22ND AUGUST 2023, NAIROBI, KENYA*

THE IGAD REGION

A S N A P S H O T O F T H E S I T U A T I O N



TRADE

Low intra regional trade; low levels of economic integration.



PEACE AND SECURITY

Communal, intra and inter state conflicts are common,, VE, TSTOC,



POPULATION

270 million people, 75% are below 35 years of age . Worst HDIs. High levels of forced displacement (16 million)



ENDOWMENTS

Huge stocks of livestock, rivers, lakes, minerals, forest and wood products etc.



OPPORTUNITIES

Clear strategic direction and aspirations: SDGs, AU Agenda 2063; Cross-border f/w, AfCFTA etc.



FOOD AND NUTRITION SECURITY

High levels of food insecurity and poor nutrition status .



ECONOMIC LANDSCAPE

Slow/ reduced economic growth, high levels of poverty & inequality despite reduction, high inflation rates

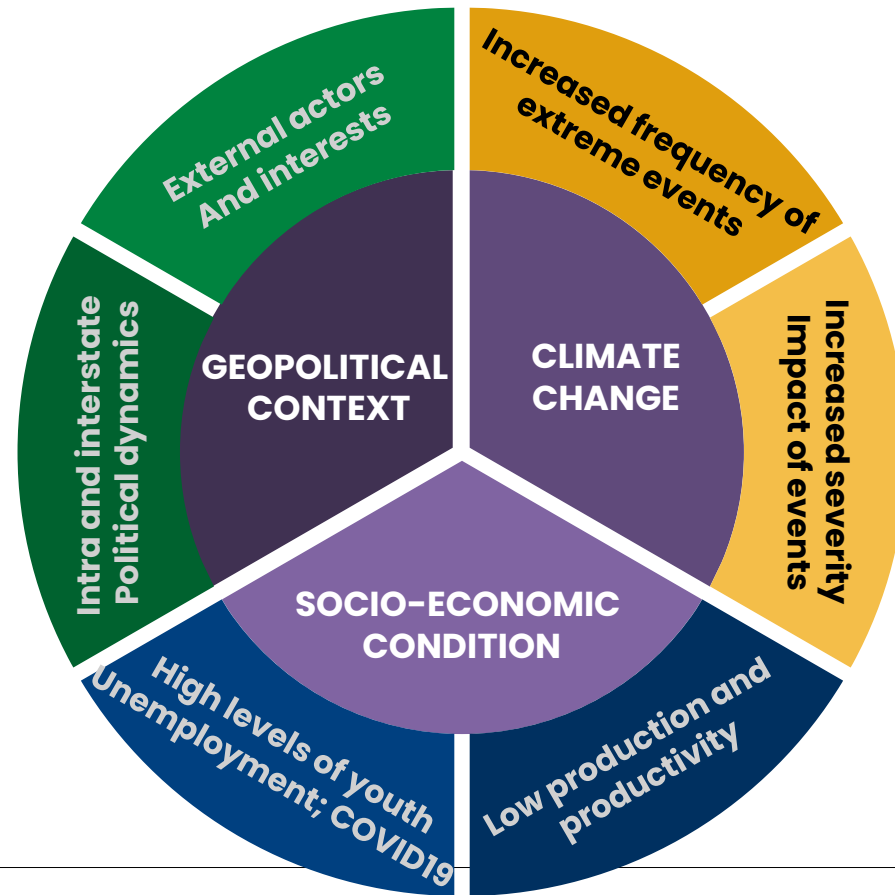


WEATHER AND CLIMATE

70% ASAL; drought prone; frequent climate induced disasters

CAUSES AND CONTRIBUTING FACTORS

A REFLECTION



IGAD'S COMPARATIVE ADVANTAGE

Reflecting on Direct Implementation & Role

CENTERS OF EXCELLENCE & MECHANISMS

Hands-on specialized COEs tailored to thematic/Sectoral priorities + Mechanisms .

GREATER POTENTIAL FOR SUSTAINABILITY

IGAD's engagement with member states and stakeholders facilitates championing projects' adaptability and sustainability within each member state's context.



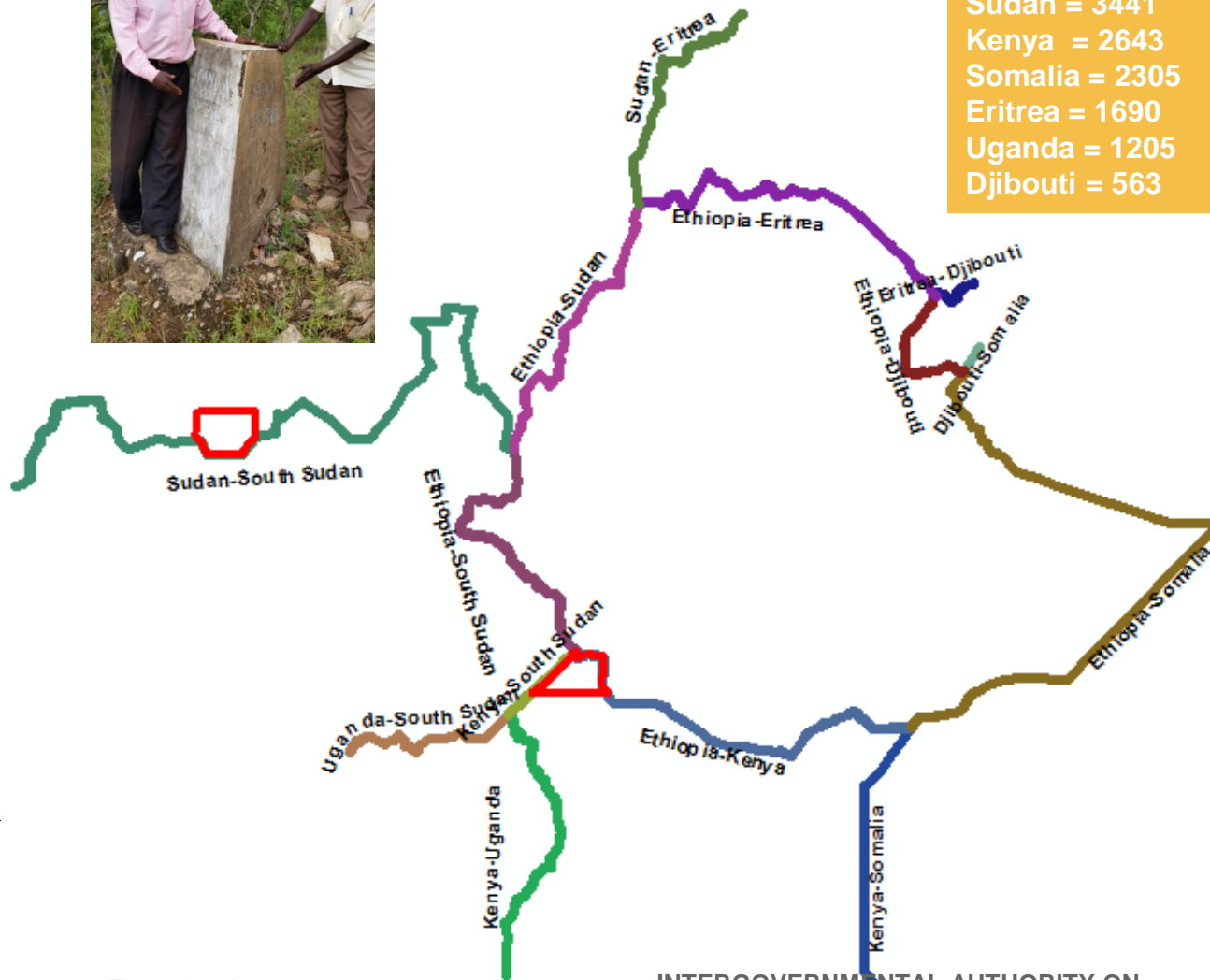
POLITICAL & TECHNICAL LEVERAGE

Institutionalized linkage with national MDAs through Expert Platforms and Policy Organs reduces implementation barriers & facilitates harmonisation

CASCADING GLOBAL & CONTINENTAL AGENDAS

UN and AU frameworks requiring domestication and localization of policies and strategies

14 BOUNDARIES SHARED BETWEEN IGAD COUNTRIES.



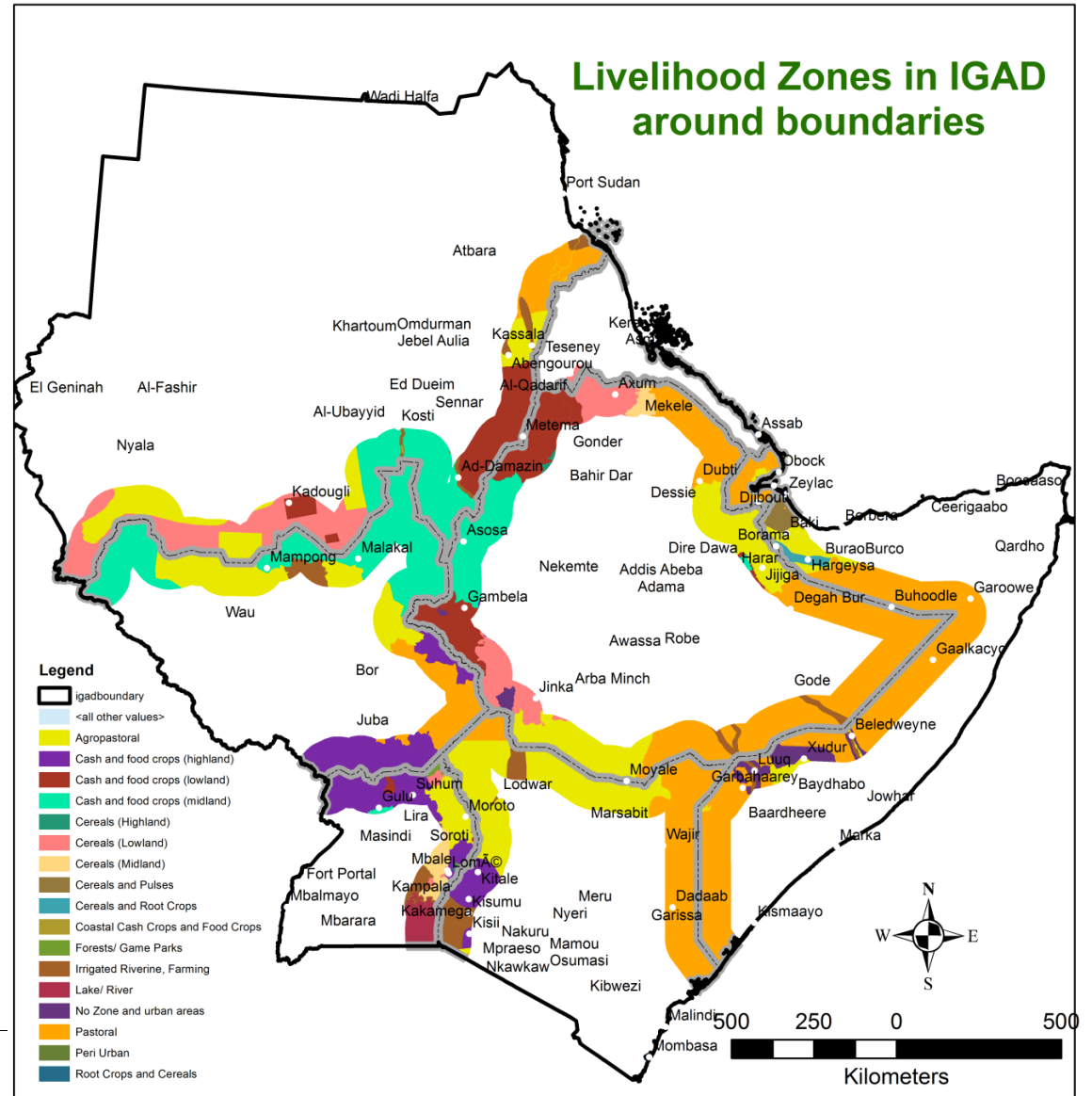
Ethiopia = 5553
 South Sudan = 3702
 Sudan = 3441
 Kenya = 2643
 Somalia = 2305
 Eritrea = 1690
 Uganda = 1205
 Djibouti = 563

Border Area	Length (Km)
Sudan-South Sudan	2081
Ethiopia-Somalia	1572
Ethiopia-Kenya	994
Ethiopia-South Sudan	970
Ethiopia-Eritrea	940
Kenya-Uganda	765
Ethiopia-Sudan	729
Kenya-Somalia	673
Sudan-Eritrea	631
Uganda-South Sudan	440
Ethiopia-Djibouti	348
Kenya-South Sudan	211
Eritrea-Djibouti	119
Djibouti-Somalia	60

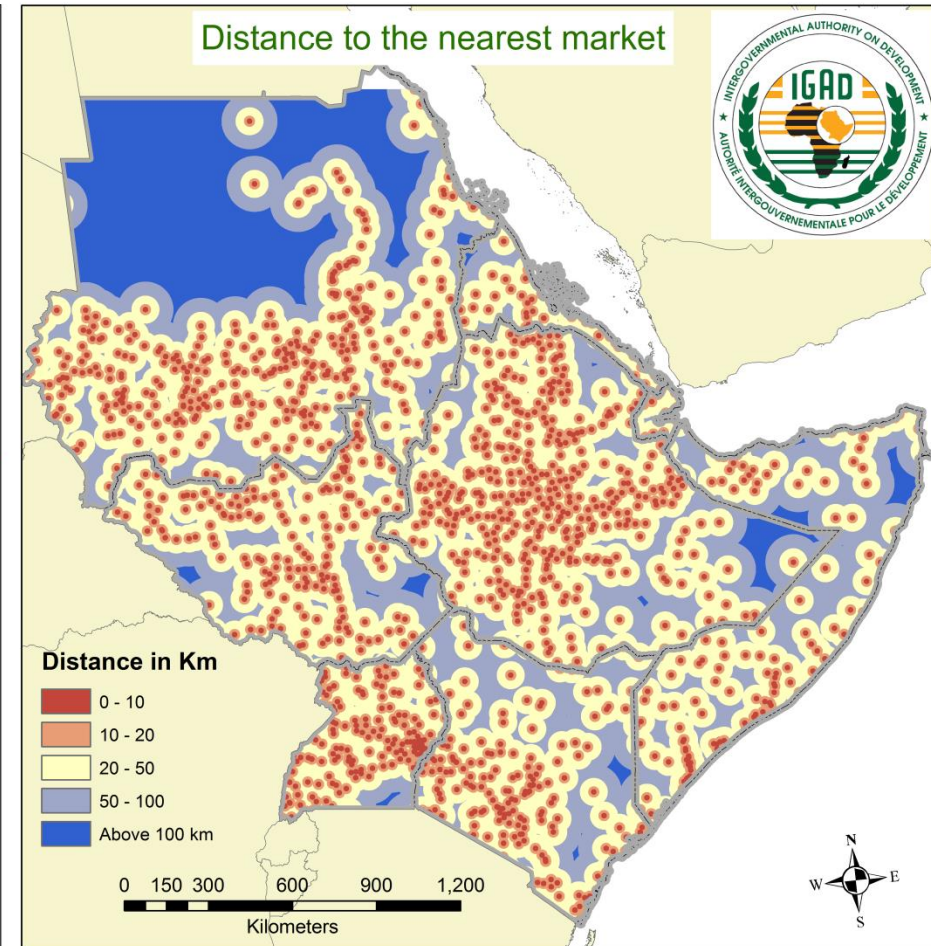
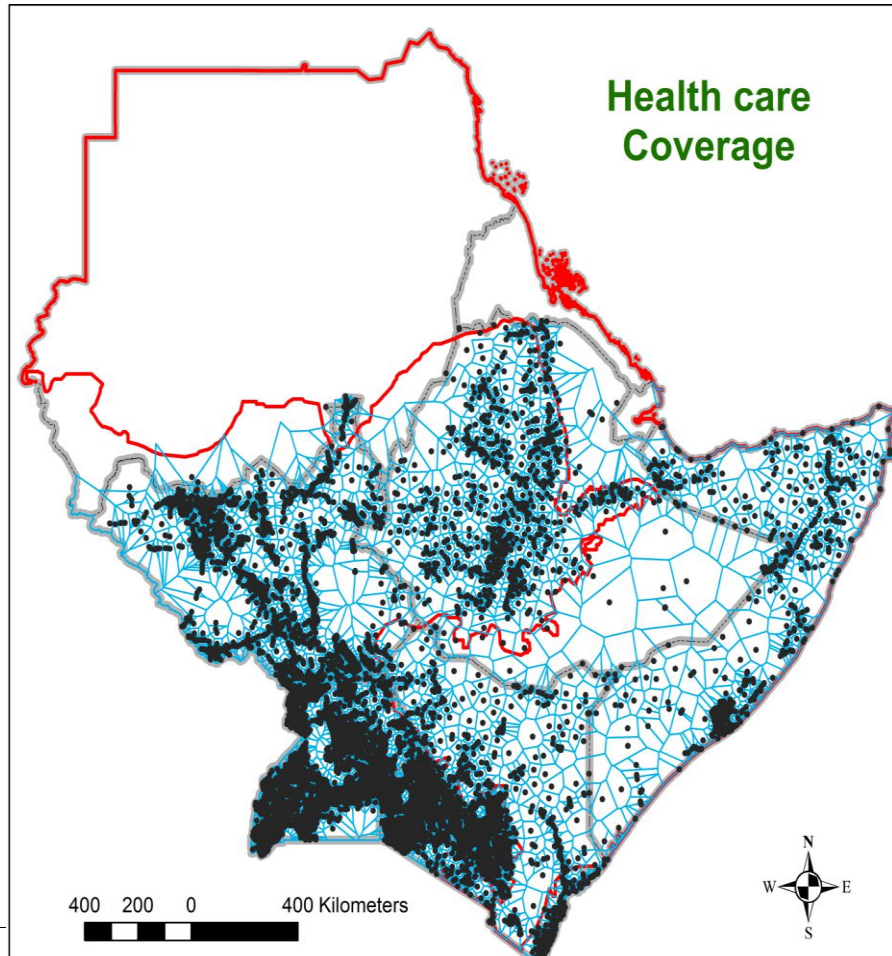
Thursday, August 24, 2023



Livelihood zones	Total area	%
Agropastoral	249741	20.7
Cash and food crops (highland)	69725	5.8
Cash and food crops (lowland)	100613	8.4
Cash and food crops (midland)	104587	8.7
Cereals (Lowland)	110967	9.2
Cereals (Midland)	4208	0.3
Cereals and Pulses	6367	0.5
Cereals and Root Crops	5992	0.5
Coastal Cash Crops and Food Crops	1650	0.1
Forests/ Game Parks	2627	0.2
Irrigated Riverine, Farming	21586	1.8
Lake/ River	4216	0.3
No Zone and urban areas	16552	1.4
Pastoral	505516	42.0
Peri Urban	134	0.0
Root Crops and Cereals	227	0.0



BASIC INFRASTRUCTURE DISTRIBUTION



IGAD CLUSTER APPROACH

Key features of the IGAD cluster approach:

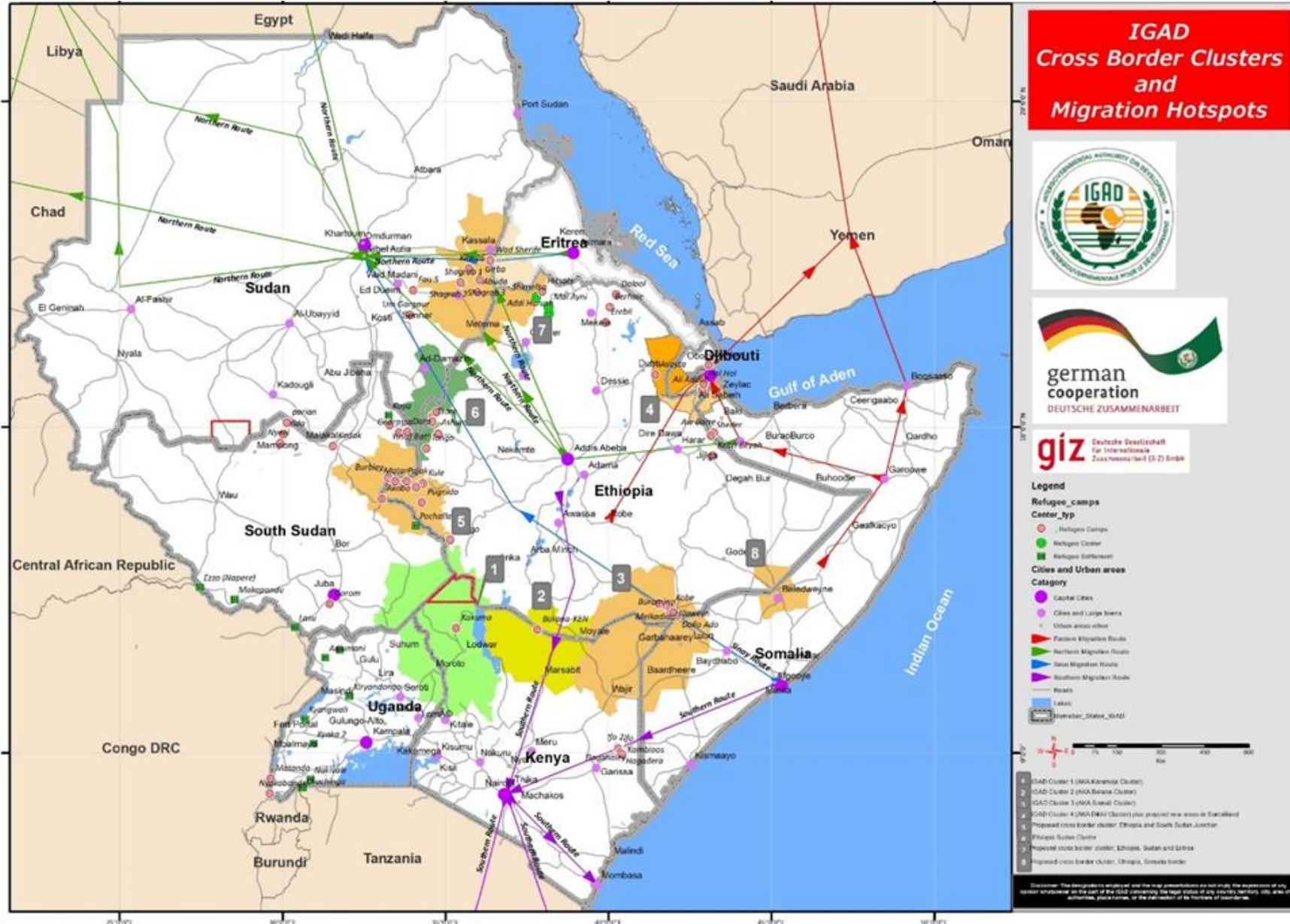
Consistent with the African Union Convention on Cross Border Cooperation – The Niamey Convention

Decentralized coordination unit-
Cross Border Development Facilitation Unit

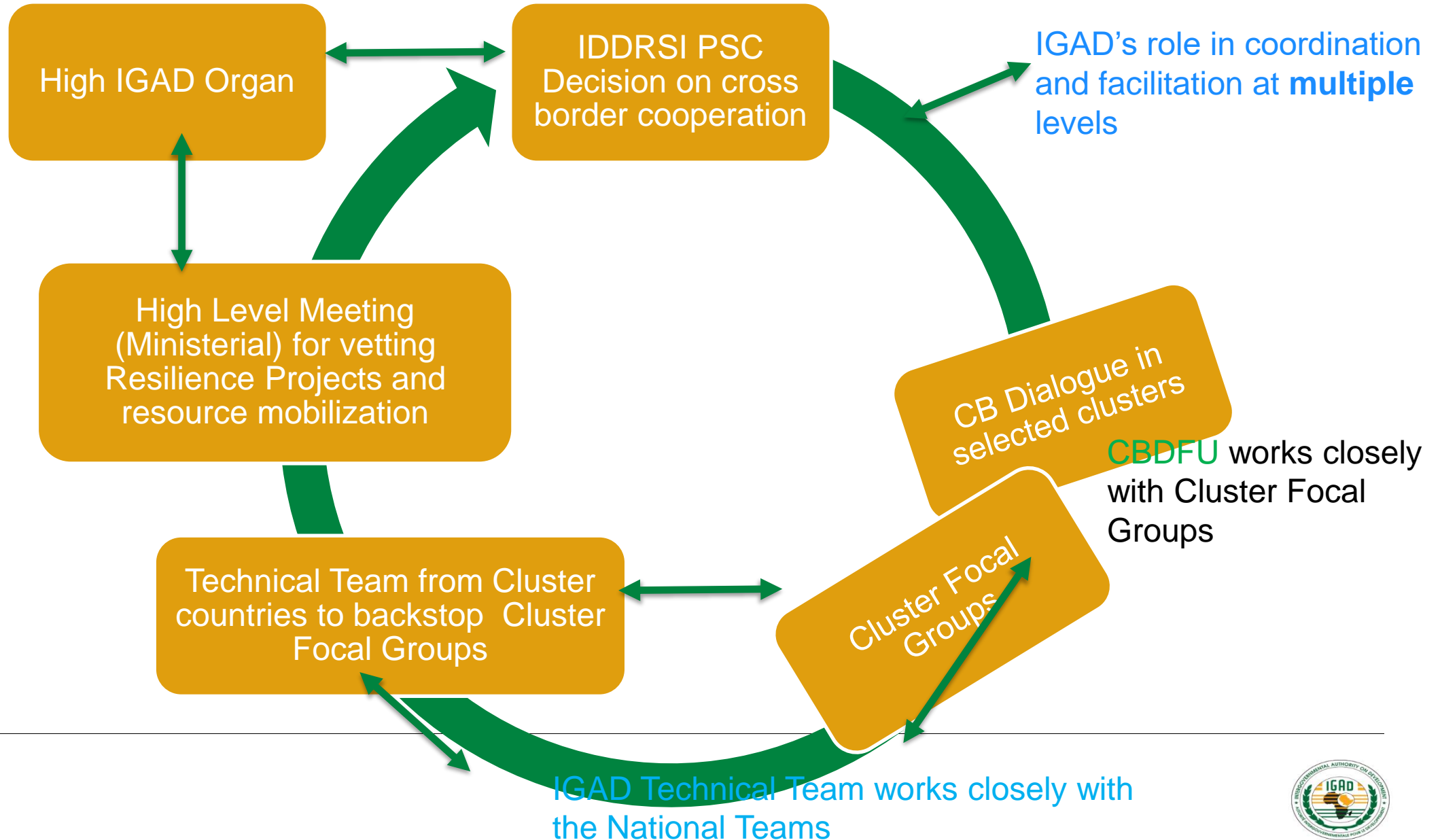
Ownership by Member States

Multiple level of participation: These are at community level, local and national experts, and regional experts from IGAD and Development partners.

IGAD Cluster Approach



Conceptual Framework to Facilitate Cross Border Development Cooperation in the IGAD Region



PRIORITY INTERVENTION AREAS FROM CBD

Clusters	Priority Intervention Areas Identified Resilience Project				
IGAD Cluster 1 (Ateker)	Peace and Security	Water Development and Management	Sustainable management of rangelands and pasture	Livelihoods, livestock production and health	Access to social services (health, education, market, and roads).
IGAD Cluster 4 (Dikhil)	Natural Resource Management (water and rangelands mgt)	Enhanced Production and Livelihoods Diversification	Access Basic Social Services (clean water, health, education, Markets)	Peace and Security	
IGAD Cluster 2 (Mar-Moy)	Natural resource development (water and pasture),	Water infrastructure	Peace and Security		

OPPORTUNITIES FOR BORDERLANDS DEVELOPMENT

- IGAD SIs & Divisions—ICPALD, ICPAC, CEWARN, IDDRSI, AED, HSDD, etc., are ready to provide technical backstopping & coordination of the project.
- There are complementary projects coordinated by IGAD.
 - BREFONS (IGAD and Five countries, Dji, ETH, Ken, Som, South Sudan)
 - FOOD Systems project (multiple countries) (AED, and specialised centers)
 - Sustainable Ecosystems Management Project (ICPALD)
 - Strengthening regional convergence through inclusive conflict sensitive land use and management in the Somali/Mandera cluster Project (AED)
 - Improving Land Governance in the IGAD Region: Realizing transnational land governance in the IGAD region through capacity development on innovations in land administration, land use and management, strengthening gender equality and youth empowerment (AED, LGU)
- IGAD Transhumance Protocol
- Existing Programme Documents for IGAD Clusters (1,2 & 4)
- Available IGAD MOUs, Strategic Frameworks, Protocols, Plans e.g IRIMP etc
- Formed Networks, Working Groups, FPPs, etc.

THANK YOU



PEACE, PROSPERITY AND
REGIONAL INTEGRATION



PEACE, PROSPERITY AND
REGIONAL INTEGRATION



PEACE, PROSPERITY AND
REGIONAL INTEGRATION



PEACE, PROSPERITY AND
REGIONAL INTEGRATION